

Client Detail with Addl Pics Report

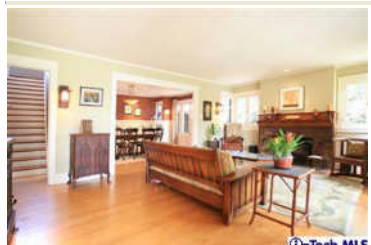
Listings as of 07/23/09 at 3:03pm

Active 07/06/09	Listing # 22126860 County: Los Angeles	621 Alpine St Pasadena, CA 91106 Cross St: El Molino Ave	Listing Price: \$1,399,000 Map: 565, J7
------------------------	---	---	--



①-Tech MLS

Prop Type	Residential	Prop Subtype(s)	SFR_D,SFR_A
Area	Pasadena (SE)	Stories	Two Level
Style	Craftsman	Approx Square Feet	2742 Taped
Beds	4	Price/Sq Ft	\$510.21
Baths(FTHQ)	2 (2 0 0 0)	Lot Sq Ft (approx)	5488 ((Assessors Data))
Year Built	1914	Lot Acres (approx)	0.126
Tax ID	5721012033		
DOM/CDOM	17/97		



①-Tech MLS



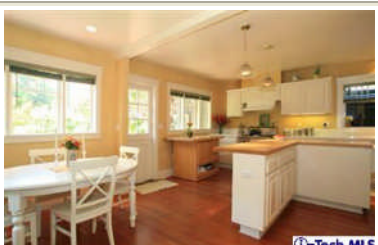
①-Tech MLS



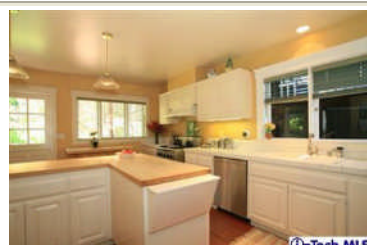
①-Tech MLS



①-Tech MLS



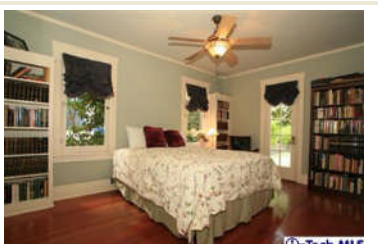
①-Tech MLS



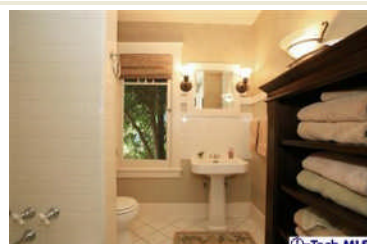
①-Tech MLS



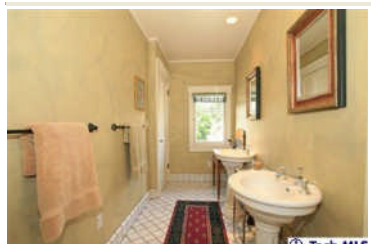
①-Tech MLS



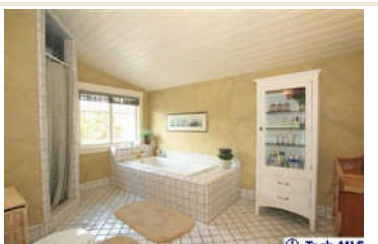
①-Tech MLS



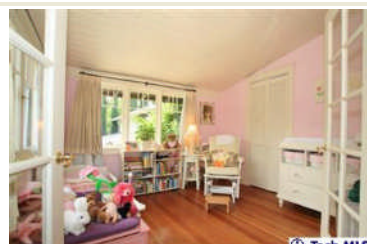
①-Tech MLS



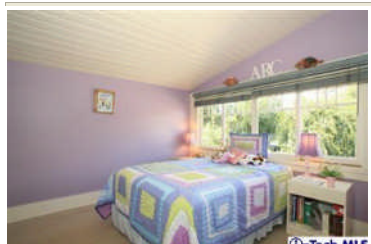
①-Tech MLS



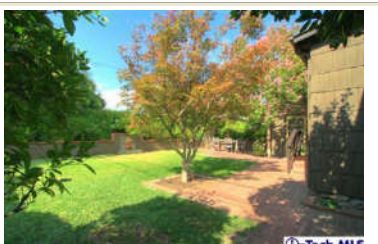
①-Tech MLS



①-Tech MLS



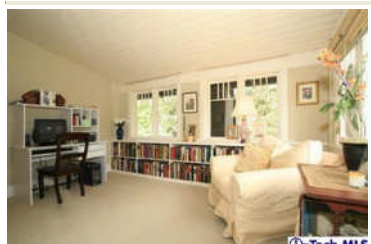
①-Tech MLS



①-Tech MLS



①-Tech MLS



①-Tech MLS

Directions West on Alpine Street off of El Molino Avenue.

Marketing Remark Located in the Madison Heights neighborhood of Pasadena, 621 Alpine Street is a light-filled, two-story Craftsman style home. The large covered front porch with river rock detailing provides a gracious entry to this architecturally authentic home. Picture windows flood the living room and front study/guest bedroom with light and views of the professionally landscaped garden. There is a ground-floor bedroom with full bath, kitchen with breakfast area and formal dining room with French doors providing outdoor access and garden views. Upstairs are a master suite with office and sitting room and another bedroom. A classic home in one of Pasadena's most desirable neighborhoods.

Pricing Ranges

Range Price No
View No
Units in Develop. #1

New Construction No
Lease No

Rooms

Den/Office Yes
Retreat Yes

Master Suite Yes
Formal Dining Room Yes

Walk-In Closet(s) Yes
Family Room No
Entry Yes

Eat Area Area, In Kitchen
Living Room Yes

Add'l Prop Features

Assessments Unknown
Fireplace Location Living Room

Fireplace Yes
Garage Detached

Garage Door Opener Yes

Description Parking Space

of Carport Spaces #1

Yard Yes

Enclosed Block Wall
Heating Type Forced Air

Wet Bar No
Air Conditioning Yes

AC Type Central
Laundry In Kitchen

Kitchen Appliance Dishwasher, Garbage Disposal, Microwave

Patio Type Brick
Roof Composition

Patio Yes
Pool No

Water Source District
Security System Yes

Sewer In, Connected & Paid
Water Softener No

Auto Timer Yes

Sprinklers Front & Rear

Financial Info

Trnsfr of Possession Close of Escrow
Land Fee

Terms Cash to New Loan

Presented By:

Kerin L Cantwell

Coldwell Banker

Lic: 01478284
Primary: 626-535-2948
Secondary: 626-449-5222 x248
Other: 626-340-6074

Lic: 00616212
2065 Huntington Dr.
San Marino, CA 91108
626-449-5222
Fax : 626-568-9507

E-mail: kcantwell@coldwellbanker.com

Web Page: <http://www.kerincantwell.com>

July 2009

Featured properties may not be listed by the office/agent presenting this brochure.

Information is provided as a courtesy by the i-Tech MLS, has not been verified, is not guaranteed, and is subject to change. The method and manner of calculating Days On Market (DOM) may not reflect the total number of days a property has been made available for sale.

Copyright ©2009 Rapattoni Corporation. All rights reserved.

